



REVERSE ANGLE PARKING



There is a new way to park in certain areas of downtown Laconia!

With the new parking style called reverse angle parking or back-in parking, you will back into a space so that the front of your car is facing the street. This method has been used across the country. Reverse angle parking will be coming soon to Beacon Street East and Beacon Street West!

Benefits of Reverse Angle Parking

Improved Driver Visibility:

- When leaving a parking space, drivers are facing forward allowing a better view of traffic and cyclists.
- Drivers do not have to back into traffic blindly when leaving. This makes departures safer, quicker and easier.

Accessible Parking and Curb Ramps

- Accessible parking spaces are provided with direct access to the sidewalk.
- Wheelchair users can load/unload from the vehicle's side or rear, away from the traffic lane.

Easier Loading/Unloading:

- When vehicle doors are open, they block pedestrian access to the travel lane and guide them back to the sidewalk.
- The vehicle's trunk is accessed from the sidewalk, making it safer and more convenient to load/unload items.

Traffic Calming

- On-street parking visually narrows the roadway lane width, contributing to slower speeds and enhancing driver alertness.

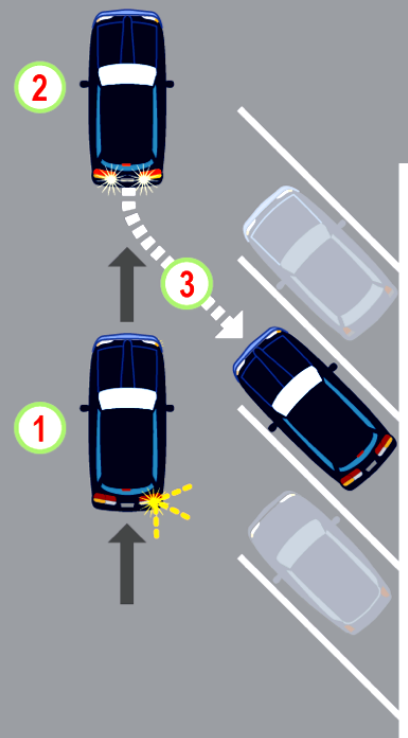
It's as easy as



How does it work?

Just like parallel parking:

1. Signal a right turn to warn other drivers.
2. Pull past the parking spot and stop.
3. Reverse into the parking spot.



For more information, please contact the Department of Public Works at 603-528-6379 or [email publicworks@laconianh.gov](mailto:publicworks@laconianh.gov)

Thank you for your cooperation!