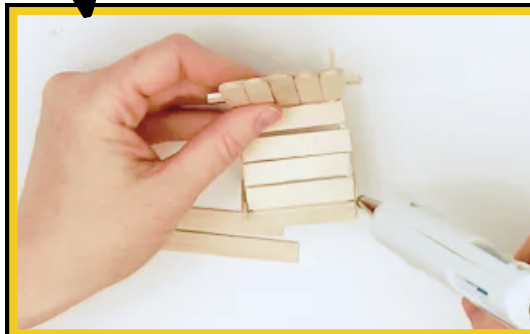
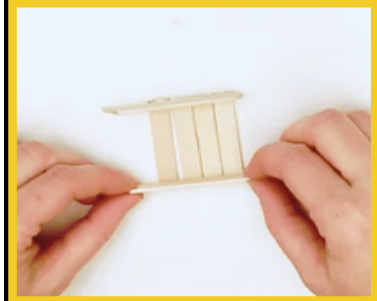
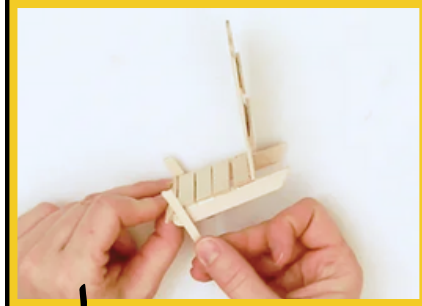
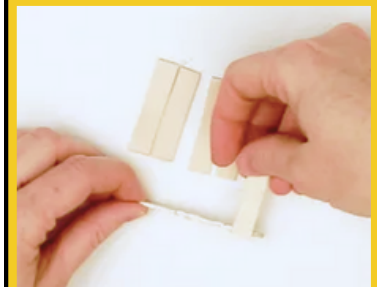
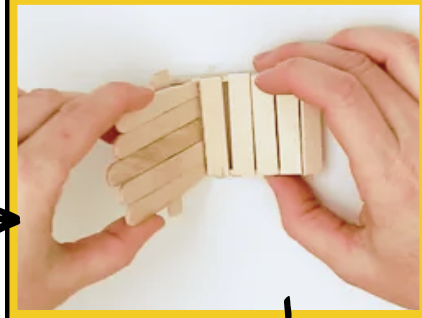
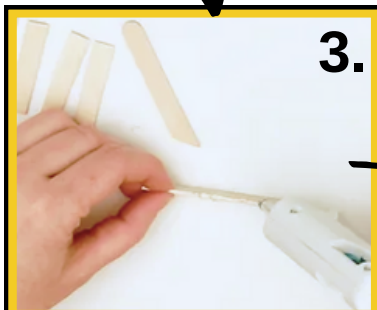
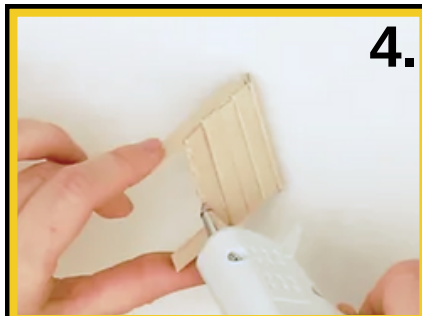
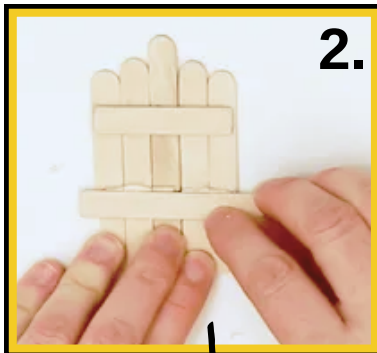


ADULT CRAFT:

DIY MINI ADIRONDACK CHAIRS



SUPPLIES

- 15 wooden craft sticks (colors of your choice!)
- Hot glue gun
- Scissors
- Ruler

INSTRUCTIONS

1. Using scissors, cut the popsicle sticks to size as per the guide on the back page. ➔
2. Hot glue together the back of the chair. Pieces 1, 2, and 3 are the back of the chair. Pieces 4 and one of piece 6 are the braces for the back.
3. Assemble the seat of the chair. Pieces 6 (use 5) and 7 are used to make the seat. Piece 7 are the braces, pieces 6 make up the seat, with one of the pieces curling around the front curved edge of the seat.
4. Attach the seat to the back of the chair, and hold until glue dries. It will be a little unsteady until the arms are on.
5. Attach the legs at a slight angle in the front and back of the chair bottom.
6. Attach the arms to the chair. Glue the flat edge to the back of the chair and a spot at the front of the chair above where the legs are.



LACONIA
PUBLIC LIBRARY

695 Main Street
Laconia, NH 03246
(603) 524-4775

MON-THURS....9-8
FRIDAY....9-5
SATURDAY....9-4



laconialibrary.org

2. CRAFT STICK CUTTING GUIDE



#1

#1. Use the full piece including both ends rounded. This is 2.5"



#2

#2. Cut 2 to 2.125" long



#2



#3

#3. Cut 2 at 2" with an angled edge on the flat side. The angle should be narrow enough to fit between the chair arms. You may need to trim to fit once assembled.



#3



#4

#4. Cut one flat end, then cut the piece down to 2.125" long



#5

#5. Cut 2 pieces at 2.25" long. These are the arms of the chair.



#5



#6



#6



#6



#6

#6. Cut 6, one flat end, then cut the piece down to 2" long. One will be a brace for the back, the other five are the seat.



#6



#6



#7

#7. Cut 2 at 2" long with an angled side. These are the braces for the seat of the chair.



#7



#8



#8

#8. Cut 2 at .875 long, then cut in half widthwise. These are the legs of the chair.

NOTES ABOUT RULER MEASUREMENT

If you look closely at a ruler, you will see that there are 15 marks between each inch, dividing each inch into 16 equal parts. Below are the lengths to each mark from any whole inch:

Mark 1	Mark 2	Mark 3	Mark 4	Mark 5	Mark 6	Mark 7	Mark 8	Mark 9	Mark 10	Mark 11	Mark 12	Mark 13	Mark 14	Mark 15
0.0625	0.125	0.1875	0.25	0.3125	0.375	0.4375	0.5	0.5625	0.625	0.6875	0.75	0.8125	0.875	0.9375