



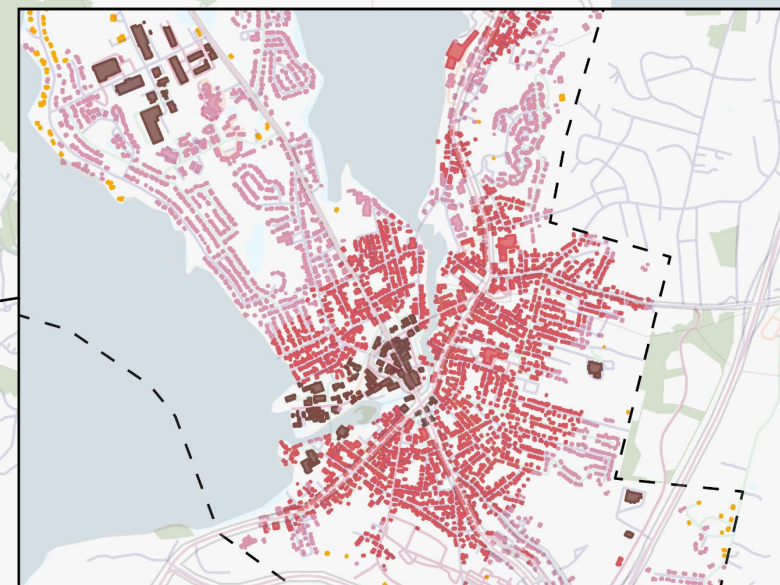
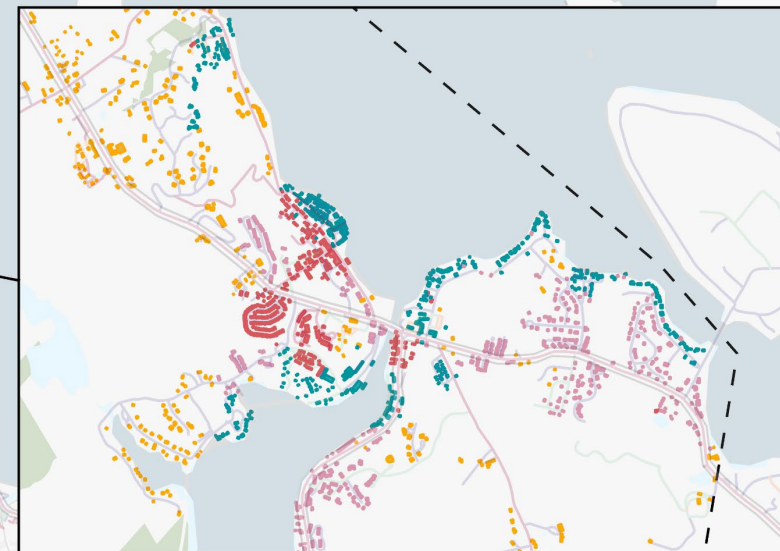
# Discussion of Place Types

Homework for February's Meeting

# Laconia's Place Types

## Place Types

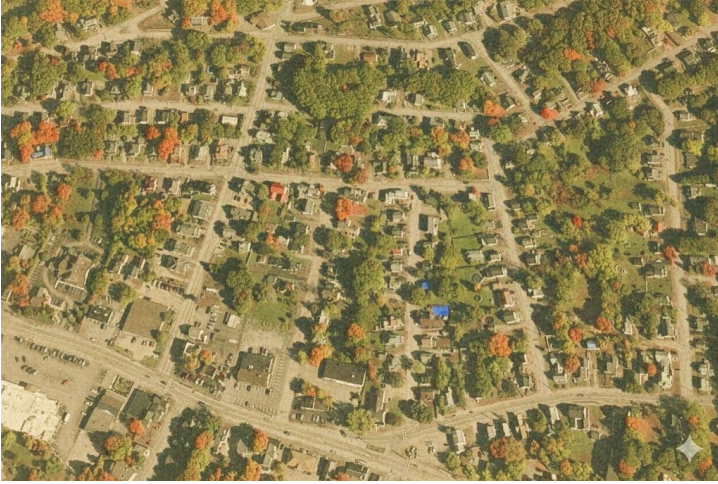
- Village Gateway Districts
- Compact Residential Fabric
- Dispersed Residential Edge
- Established Waterfront Districts
- Large-Footprint Workplaces



Sources: Esri, TomTom, Garmin, FAO, NOAA, USGS, (c) OpenStreetMap contributors, and the GIS User Community, Sources: Esri, TomTom, Garmin, FAO, NOAA, USGS, © OpenStreetMap contributors, and the GIS User Community

## Commercial and Economic Activity Driven Place Types

### Village Gateway Districts



#### Village Gateway Districts

Compact residential areas located at the edge of the downtown or village core, characterized by small lots, older structures, tightly spaced homes, and well-connected streets. These neighborhoods serve as a transitional zone between the urban center and surrounding residential areas, combining high walkability with a clearly defined village context.

### Compact Residential Fabric



#### Compact Residential Fabric

Residential areas composed of mostly single-family homes on smaller to medium-sized lots, with winding streets off well-traveled thoroughways. These neighborhoods are more auto-oriented with lower connectivity than urban areas, but more structured than rural areas and generally have higher property values.

### Dispersed Residential Edge



#### Dispersed Residential Edge

Residential areas composed primarily of single-family homes on larger lots, often newer construction. These neighborhoods are more rural in character, with abundant open space and greenery, and are typically well-connected to main thoroughways, supporting convenient access while maintaining a spacious, less dense environment.

## Residentially Driven Place Types

### Established Waterfront Districts



#### Established Waterfront Districts

Compact residential areas characterized by older cottages and vacation-style homes on small, closely spaced lots, with intermittent newer development. Street networks are shaped by shoreline geography, resulting in limited access points, narrow local streets, and higher connectivity along primary waterfront corridors.

### Large-Footprint Workplaces



#### Large-Footprint Workplaces

Clusters of employment-related and institutional uses, including offices, industrial facilities, and municipal buildings. These areas are typically served by higher-capacity roadways and show elevated betweenness due to concentrated employment activity and regional through-traffic.

### Open Space/Undeveloped Land

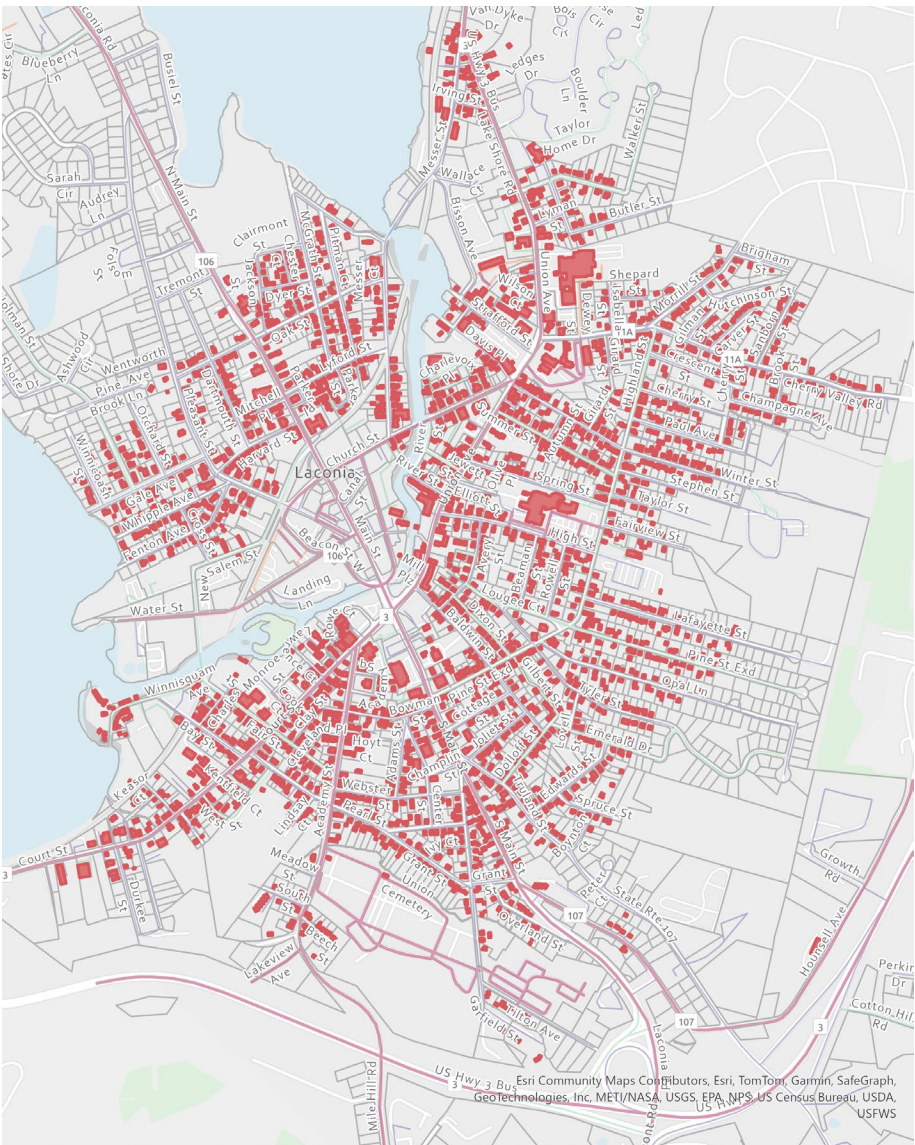


#### Open Space/Undeveloped Land

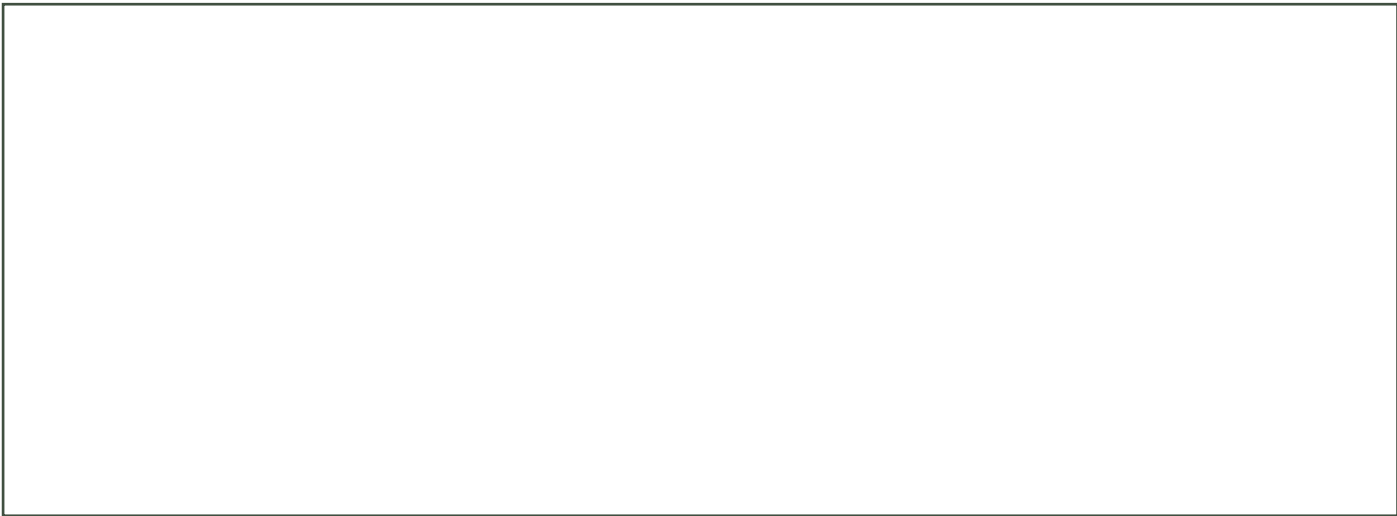
Areas with minimal development and limited built infrastructure, including vacant lots, fields, and natural land. Street networks are sparse or absent, resulting in low connectivity and limited accessibility compared with suburban residential or more urban neighborhoods.

*\*\*Not shown on the place-type map because there are not buildings or roads in these locations to map, but we do recognize their importance to Laconia.\*\**

# Village Gateway Districts



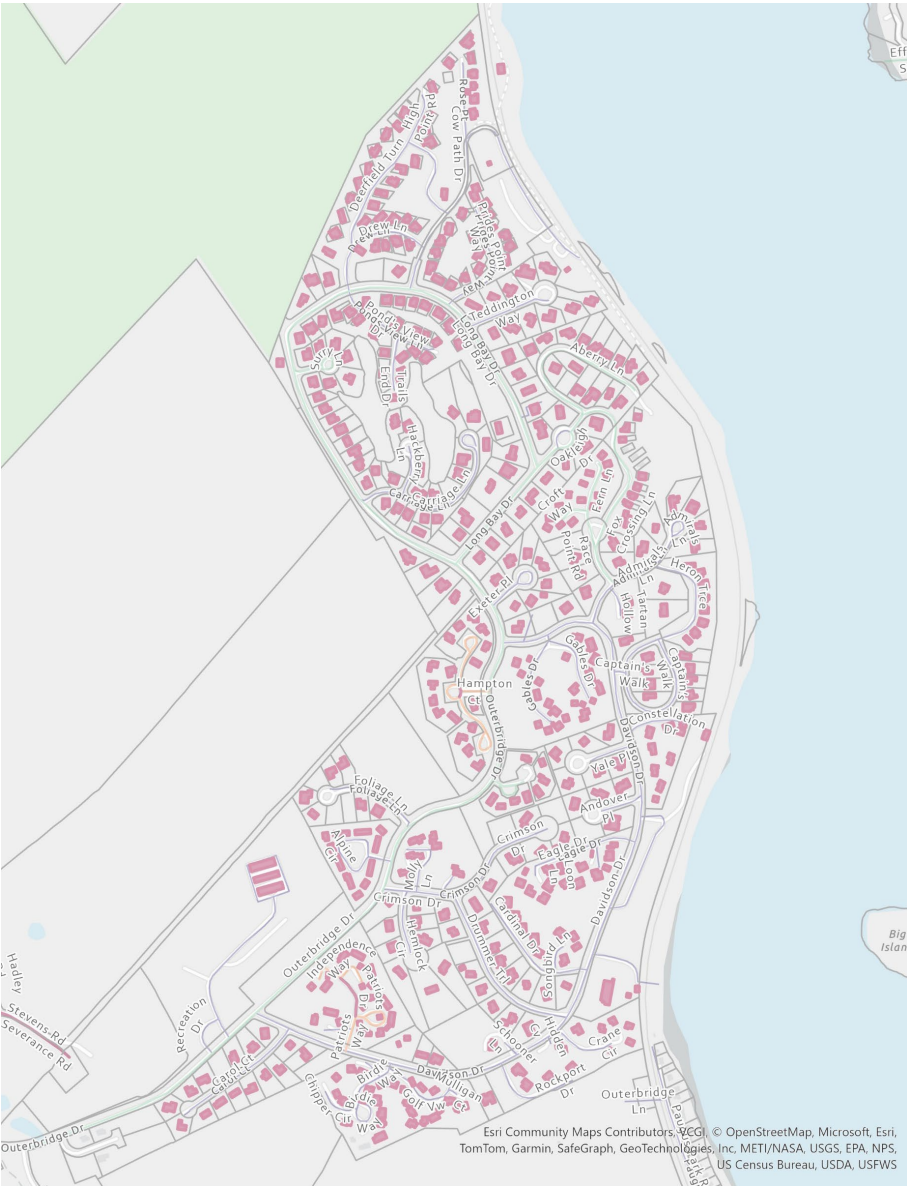
## Opportunities



## Challenges



# Compact Residential Fabric



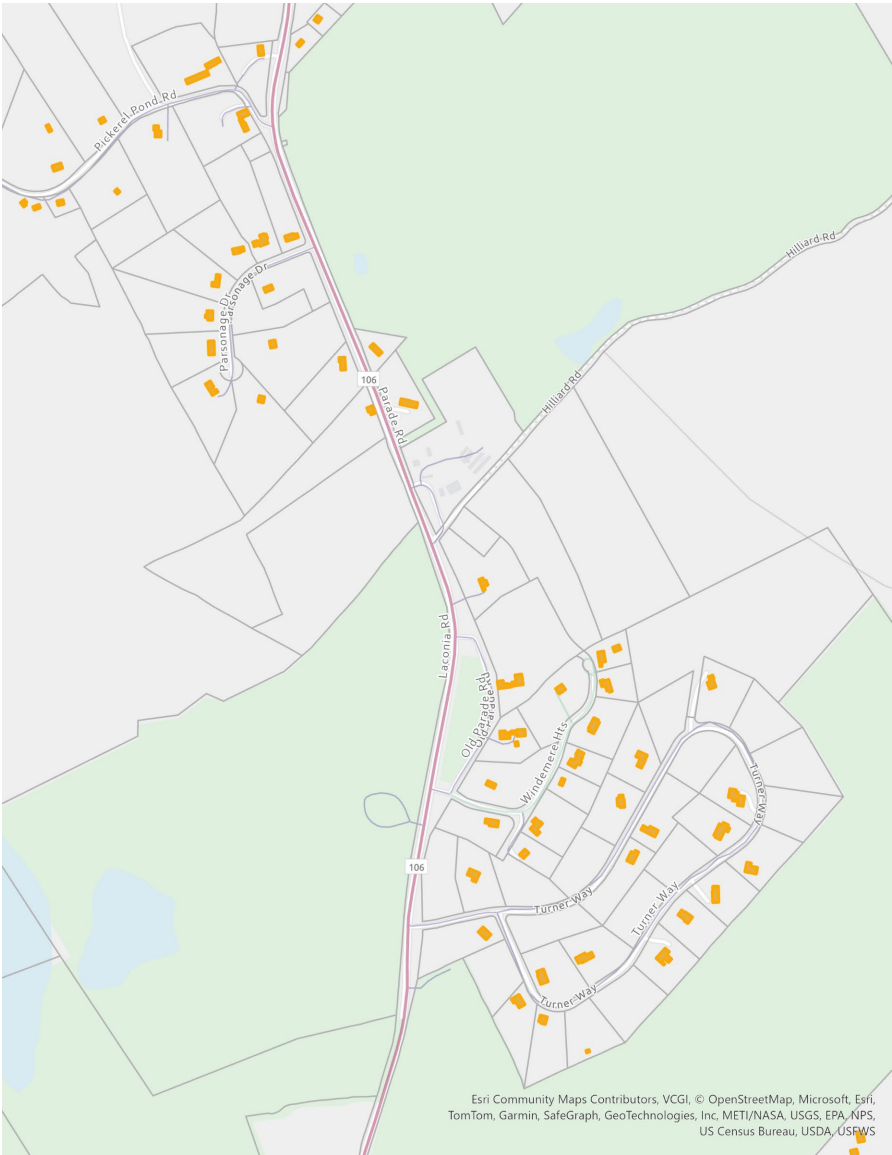
## Opportunities

## Challenges

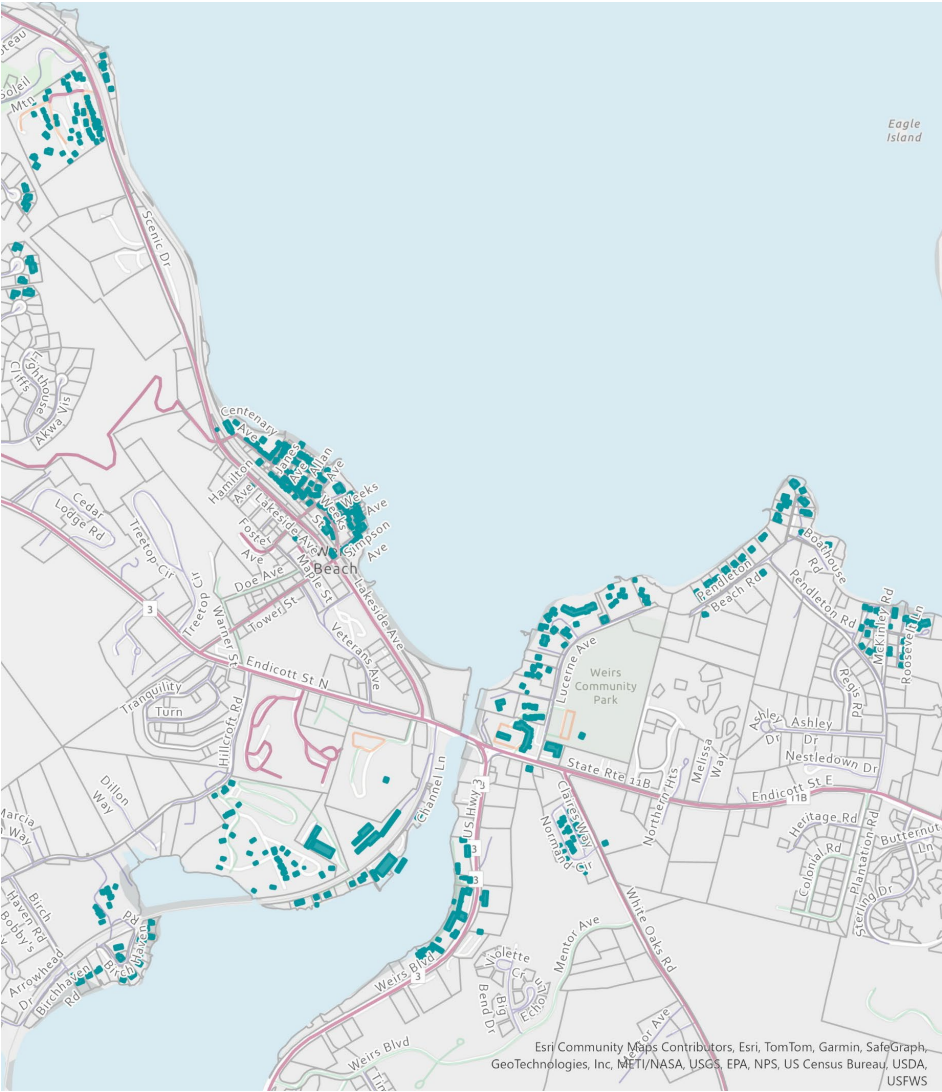
# Dispersed Residential Edge

## Opportunities

## Challenges



# Established Waterfront Districts



## Opportunities

## Challenges

[illegible][illegible]