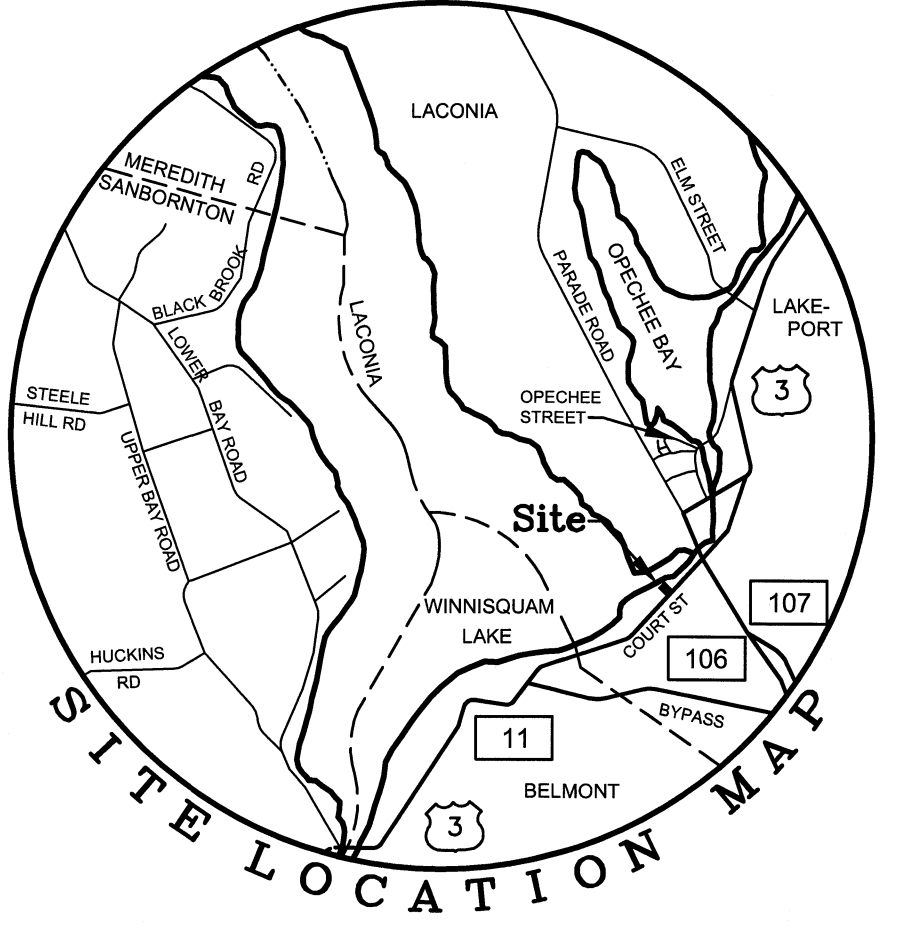
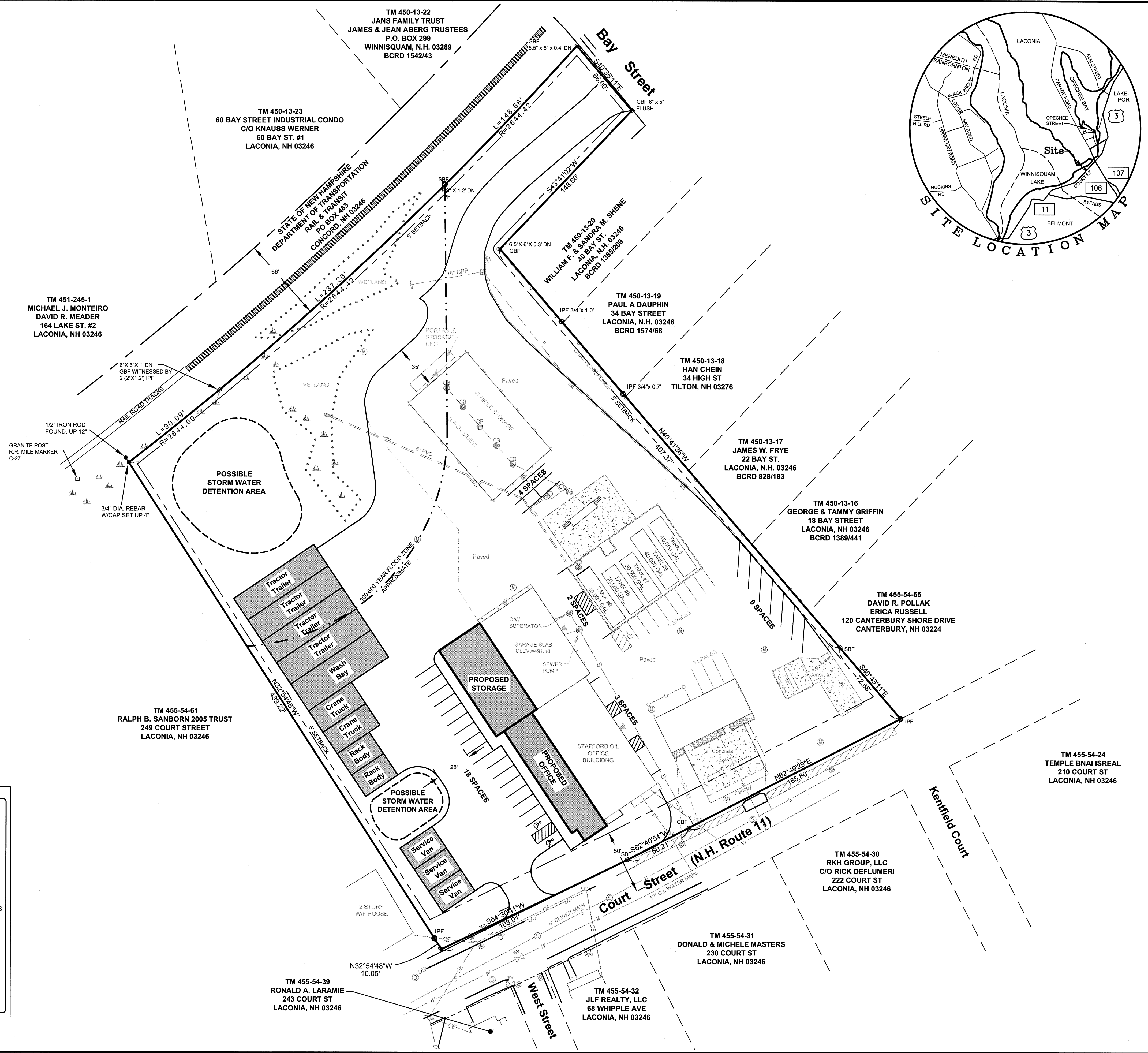


SEE NOTE 3

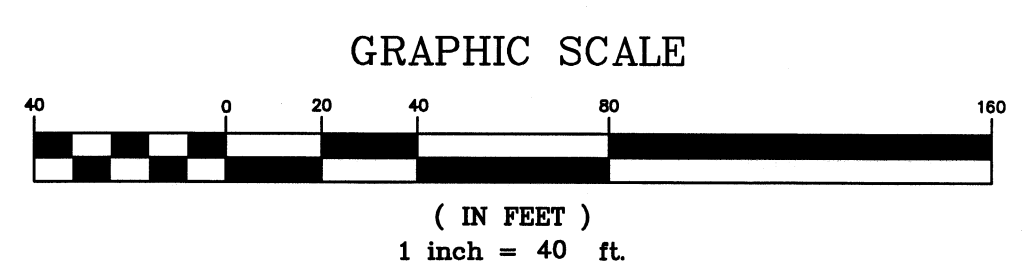


- NOTES:**
- OWNER OF RECORD: GEORGE C. STAFFORD & SONS INC.
231 COURT STREET
LACONIA, NH 03246
TM 455-54-62, 63 & 64
 - ZONE: (UC) URBAN COMMERCIAL
 - TOTAL LAND AREA = 187,615± SF - 4.3± AC
 - PROPOSED GREEN SPACE = 57,970 SF
 - A PORTION OF THIS PROPERTY FALLS WITHIN ZONE B AREAS BETWEEN LIMITS OF THE 100-YEAR FLOOD AND 500-YEAR FLOOD OR CERTAIN AREAS SUBJECT TO 100-YEAR FLOODING WITH AVERAGE DEPTH LESS THAN ONE (1) FOOT OR WHERE THE CONTRIBUTING DRAINAGE AREA IS LESS THAN ONE SQUARE MILE OR AREA PROTECTED BY LEVELS FROM THE BASE FLOOD. (MEDIUM SHADING) AS SHOWN ON FIRM FLOOD MAP, CITY OF LACONIA NEW HAMPSHIRE BELKNAP COUNTY PANEL 5 OF 5, COMMUNITY PANEL NUMBER 33005 0005B, EFFECTIVE DATE, AUGUST 15, 1980.



LEGEND

○	IRON PIPE/REBAR
□	BOUND
⊙	SEWER MANHOLE
—	SEWER line
⊞	CATCH BASIN
⊕	UTILITY POLE
⊙	LIGHT
—OHU	OVERHEAD UTILITIES
⊞	WATER SHUT-OFF
⊞	WATER VALVE
⊙	WELL
—	WATERLINE
⊙	MONITORING WELL
—	SIGN



Preliminary Site Plan
For
George C. Stafford & Sons Inc.
N.H. Route 11 / Court Street
Laconia, Belknap County, New Hampshire

DATE: AUGUST 30, 2006	OWNER OF RECORD: GEORGE C. STAFFORD & SONS INC.
SCALE: 1"= 40'	TAX MAP LOT No.: 455-54-62, 63 & 64
FIELD BOOK: XXX	Revisions
PROJ NO.: 14035SMITH-YERKES	
SHEET NO.: 1 of 1	
DWG NO.: 14035CP5.dwg	

STEVEN J. SMITH & ASSOCIATES, INC.
6 LILY POND ROAD, GILFORD, N.H. 03249
SURVEYING - ENGINEERING - LAND PLANNING PHONE (603) 524-1468 FAX (603) 524-4731
©COPYRIGHT 2020 TAB NAME: CPS JOB No. 14035